

# Tap and Drill Kits

3 Series Available • NC, NF, Metric

Ensemble de tarauds et de forets

Juegos de machuelos y brocas

## ALL KITS INCLUDE

- 10 popular sized high speed steel hand taps.
- 10 popular sized high speed steel screw machine length drills.
- 128 page Machinist's Guide for Taps.
- Packaged in a durable plastic pouch.



List No. 8001

EDP NO. 37103		EDP NO. 37104		EDP NO. 37105	
SET NO. 103 - NC TAPS		SET NO. 104 - NF TAPS		SET NO. 105 - METRIC TAPS	
NC TAPS	DRILLS	NF TAPS	DRILLS	METRIC TAPS	DRILLS
#4-40	#44	#4-48	#43	M3 x 0.5	#40
#5-40	#39	#5-44	#38	M3.5 x 0.6	#33
#6-32	#36	#6-40	#34	M4 x 0.7	#30
#8-32	#30	#8-36	#29	M4.5 x 0.75	#26
#10-24	#25	#10-32	#21	M5 x 0.8	#19
1/4-20	#7	1/4-28	#3	M6 x 1	#9
5/16-18	F	5/16-24	I	M7 x 1	19/64
3/8-16	5/16	3/8-24	Q	M8 x 1.25	17/64
7/16-14	U	7/16-20	W	M10 x 1.5	Q
1/2-13	27/64	1/2-20	29/64	M12 x 1.75	Y

Jeu de forets

Juego de brocas

## S & D Drill Sets

In metal indexed stand

List No. 8040 —

3-Flat Shanks (List No. 1424S)

List No. 8040R —

Round Shanks (List No. 1424R)



## S & D Drill Sets

In metal indexed case

List No. 8040 —

3-Flat Shanks (List No. 1424S)

List No. 8040R —

Round Shanks (List No. 1424R)



SET NO.	PIECES PER SET	SIZE RANGE	8040 EDP NO.	8040R EDP NO.
33F	33	1/2" to 1"	18111	—
33R		by 64ths	—	18112

SET NO.	PIECES PER SET	SIZE RANGE	8040 EDP NO.	8040R EDP NO.
20HD	8	9/16-5/8-11/16-3/4	18110	—
20HR		13/16-7/8-15/16-1	—	18109

## Taper Shank Drill Sets

In metal indexed case

High Speed Steel

List No. 8000 (List No. 1302)



SET NO.	PIECES PER SET	SIZE RANGE	EDP NO.
33HD	16	33/64 to 3/4 by 64ths	18001
34HD		49/64 to 1 by 64ths	18002

## MORSE® Modifications & Specials

Complete Tool Design  
And Manufacturing Services  
From Blueprint Specials to  
Modified Regulars

# Morse Drill Sets

Jeu de forets

Juego de brocas

## Jobber Length

High Speed Steel — 118° Point  
General Purpose

List No. 8030  
In Metal Indexed Case



SET NO.	PIECES PER SET	SIZE RANGE	BRIGHT EDP NO.	TREATED EDP NO.
2HD	21	1/16 to 3/8 by 64ths	18143	18100
5HD	29	1/16 to 1/2 by 64ths	18144	18101
6HD	15	1/16 to 1/2 by 32nds	18145	18102
8HD	60	Nos. 1 to 60	18146	18103
15HD	26	A to Z	18147	18104
22HD	13	1/16 to 1/4 by 64ths	18148	18105
24HD	20	Nos. 61 to 80	—	18106
26HD	25	1.0mm to 13.0mm by .5mms	—	18107
28HD	13	1.0mm to 7.0mm by .5mms	—	18108

## TiN Coated

List No. 8030

In Metal Indexed Case

SET NO.	PIECES PER SET	SIZE RANGE	TIN COAT EDP NO.
5HG	29	1/16 to 1/2 by 64ths	18183

## Left Hand Jobber Length

High Speed Steel — 118° Point

List No. 8020

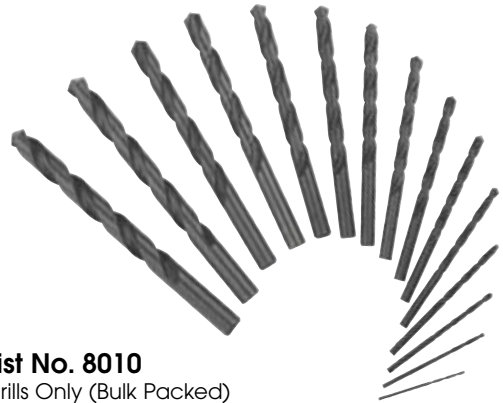
In Metal Indexed Case

SET NO.	PIECES PER SET	SIZE RANGE	EDP NO.
5LD	29	1/16 to 1/2 by 64ths	18005

## Jobber Length

High Speed Steel — 118° Point  
Treated — Black Oxide  
General Purpose — DRILLS ONLY

SET NO.	PIECES PER SET	SIZE RANGE	EDP NO.
2H	21	1/16 to 3/8 by 64ths	18050
5H	29	1/16 to 1/2 by 64ths	18051
6H	15	1/16 to 1/2 by 32nds	18052
8H	60	Nos. 1 to 60	18053
15H	26	A to Z	18054
22H	13	1/16 to 1/4 by 64ths	18055



List No. 8010  
Drills Only (Bulk Packed)

## 3-in-1 Combination Jobber Length

High Speed Steel — 118° Point

SET NO.	PCS. PER SET	SIZE RANGE	BRIGHT EDP NO.	TREATED EDP NO.
69HD	115	1/16 to 1/2 by 64ths A-Z and Nos. 1-60	18004	18003



List No. 8000  
In Metal Indexed Case

# Morse Drill Sets

Jeu de forets

Juego de brocas

## 3/8" Reduced Shank Jobber Length

High Speed Steel - 118° Point  
Treated - Black Oxide

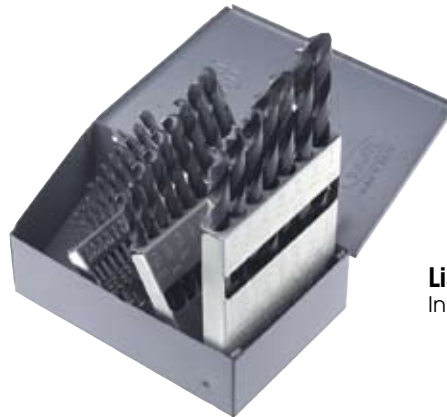
List No. 8035  
In Metal Indexed Case



SET NO.	PIECES PER SET	SIZE RANGE	EDP NO.
5HT	29	1/16 to 1/2 by 64ths	18400
6HT	15	1/16 to 1/2 by 32nds	18401

## Heavy Duty Jobber Length

High Speed Steel — 135° Split Point  
Treated (Black Oxide) — NAS 907, Type B



List No. 8080  
In Metal Indexed Case

SET NO.	PIECES PER SET	SIZE RANGE	EDP NO.
5HS	29	1/16 to 1/2 by 64ths	18172
8HS	60	Nos. 1 to 60	18174
22HS	13	1/16 to 1/4 by 64ths	18176

## Ambore™ Heavy Duty Jobber Length

High Speed Steel — 135° Split Point  
Gold and Black Finish

List No. 8080  
In Metal Indexed Case



SET NO.	PIECES PER SET	SIZE RANGE	EDP NO.
5GS	29	1/16 to 1/2 by 64ths	18182

## Cobalt Heavy Duty Jobber Length

135° Split Point

List No. 8070  
In Metal Indexed Case



SET NO.	PIECES PER SET	SIZE RANGE	EDP NO.
5CD	29	1/16 to 1/2 by 64ths	18166
6CD	15	1/16 to 1/2 by 32nds	18167
8CD	60	Nos. 1 to 60	18168
15CD	26	A to Z	18169